

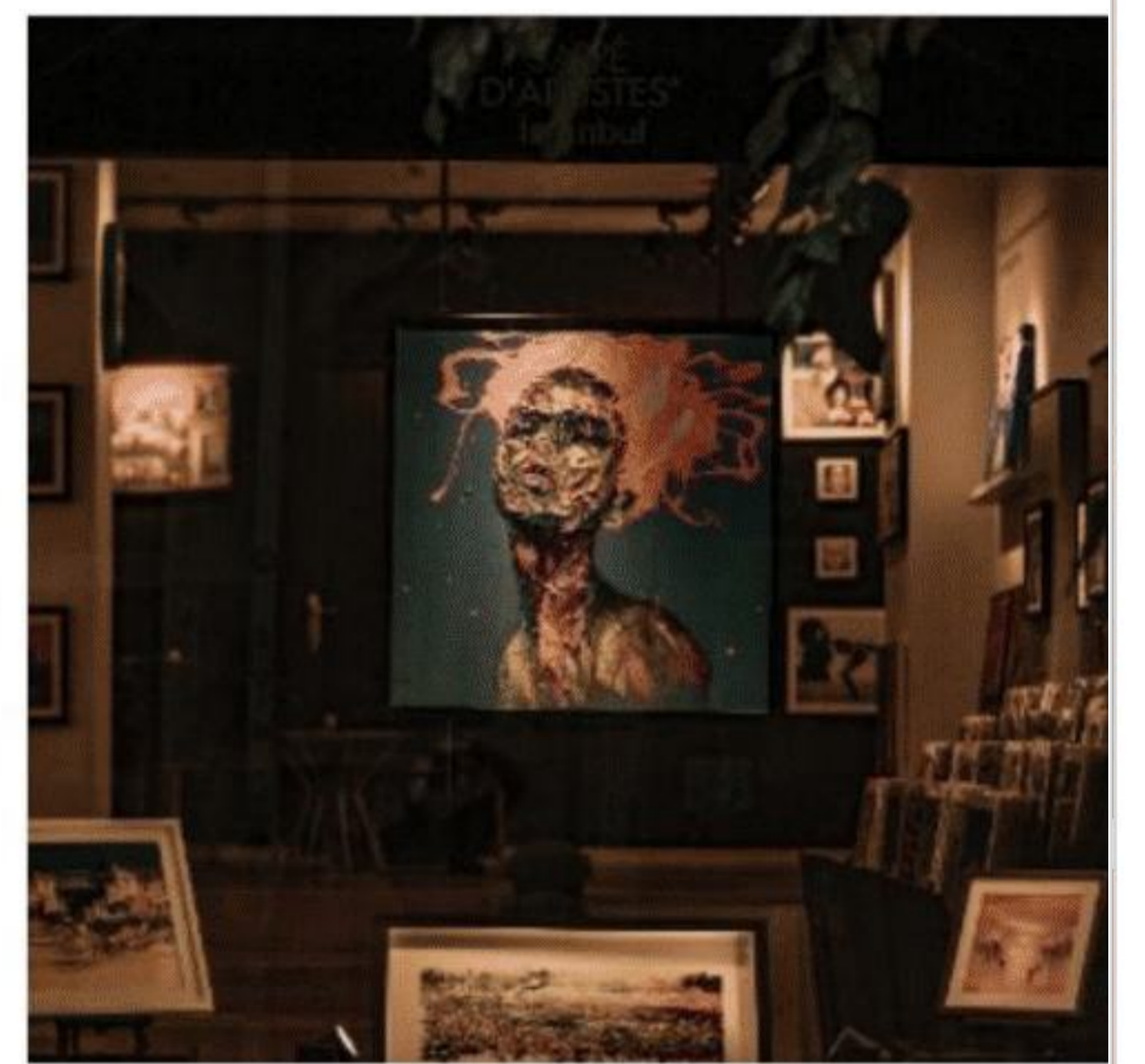
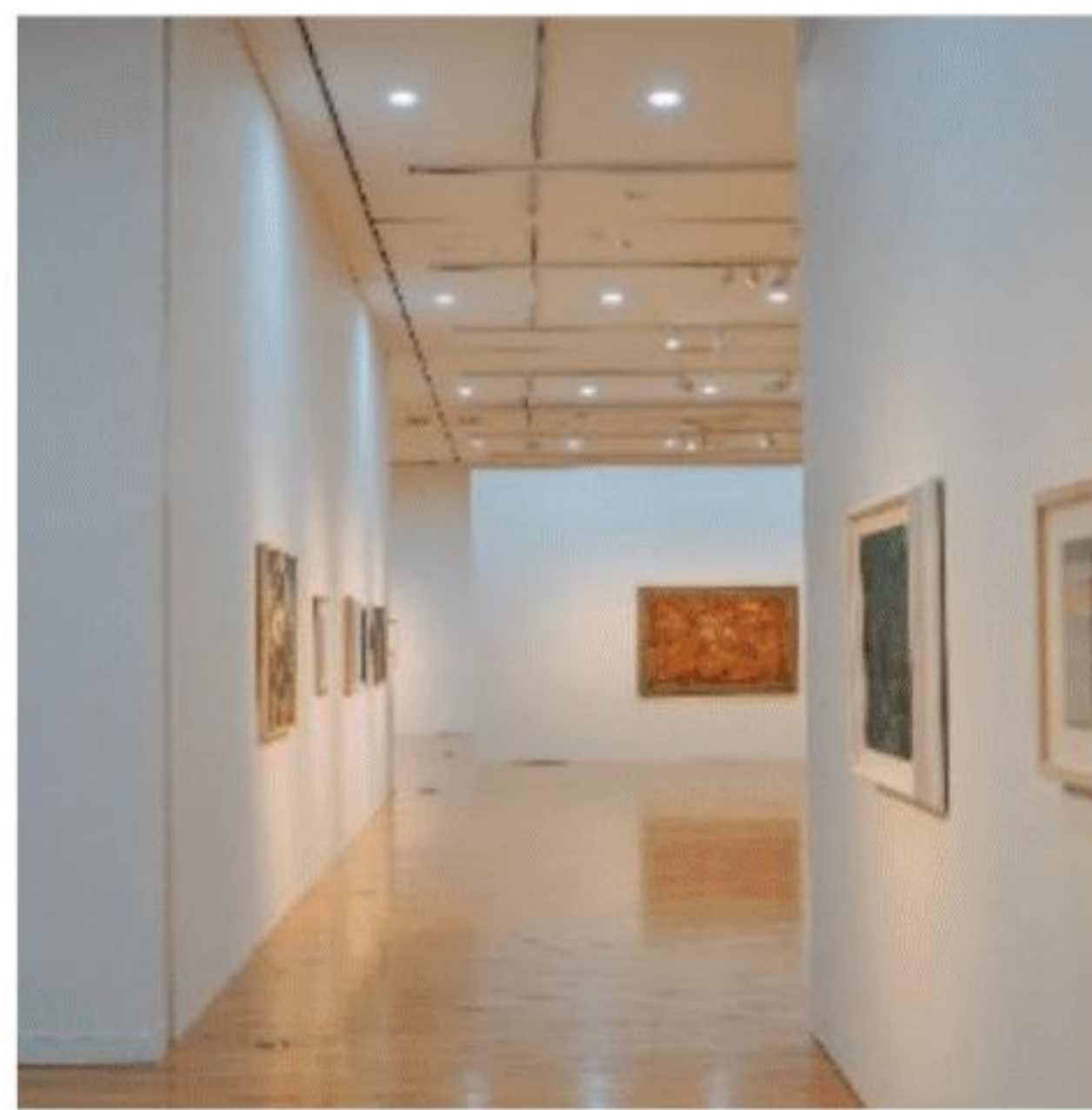


ARTFI TOKENOMICS

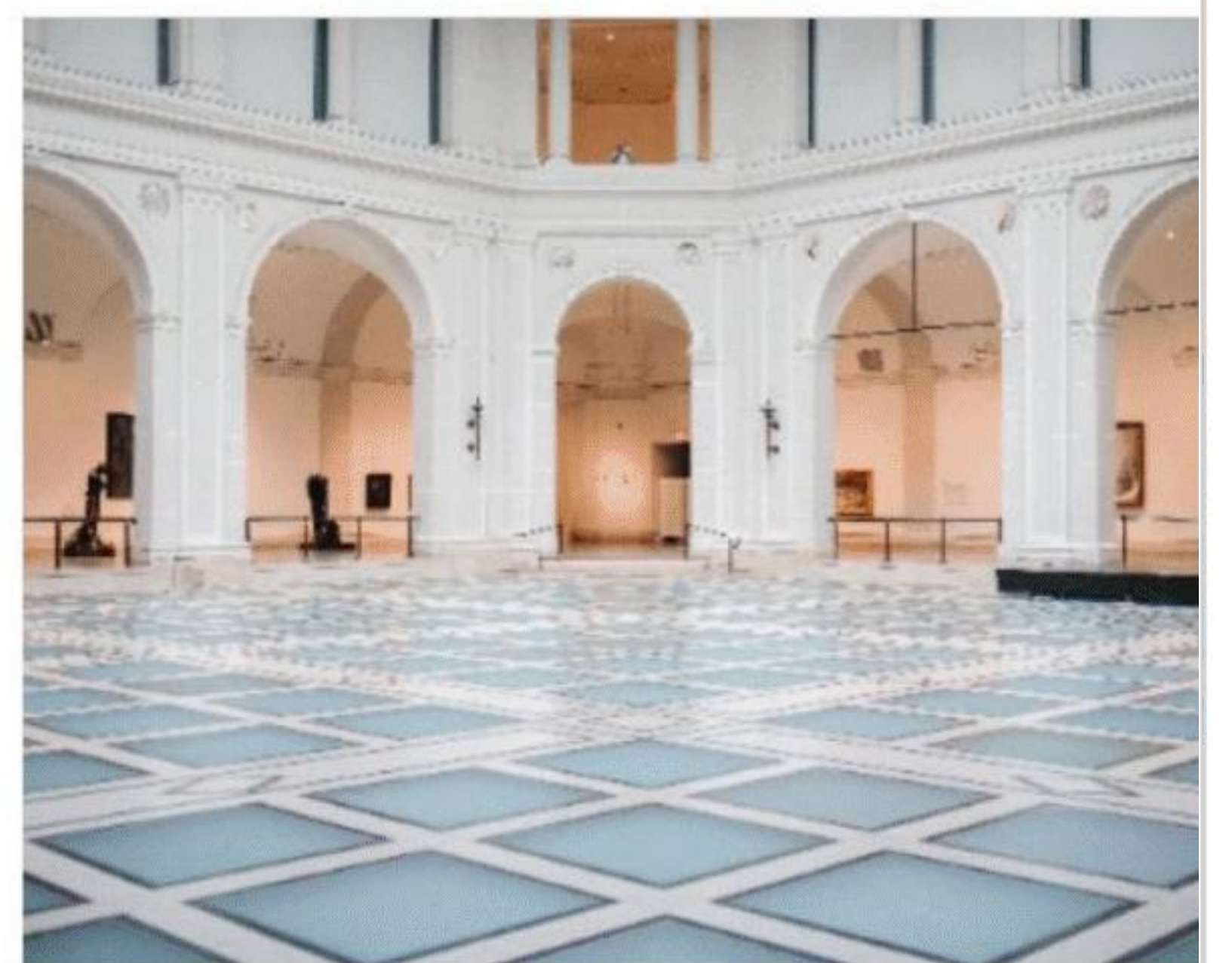
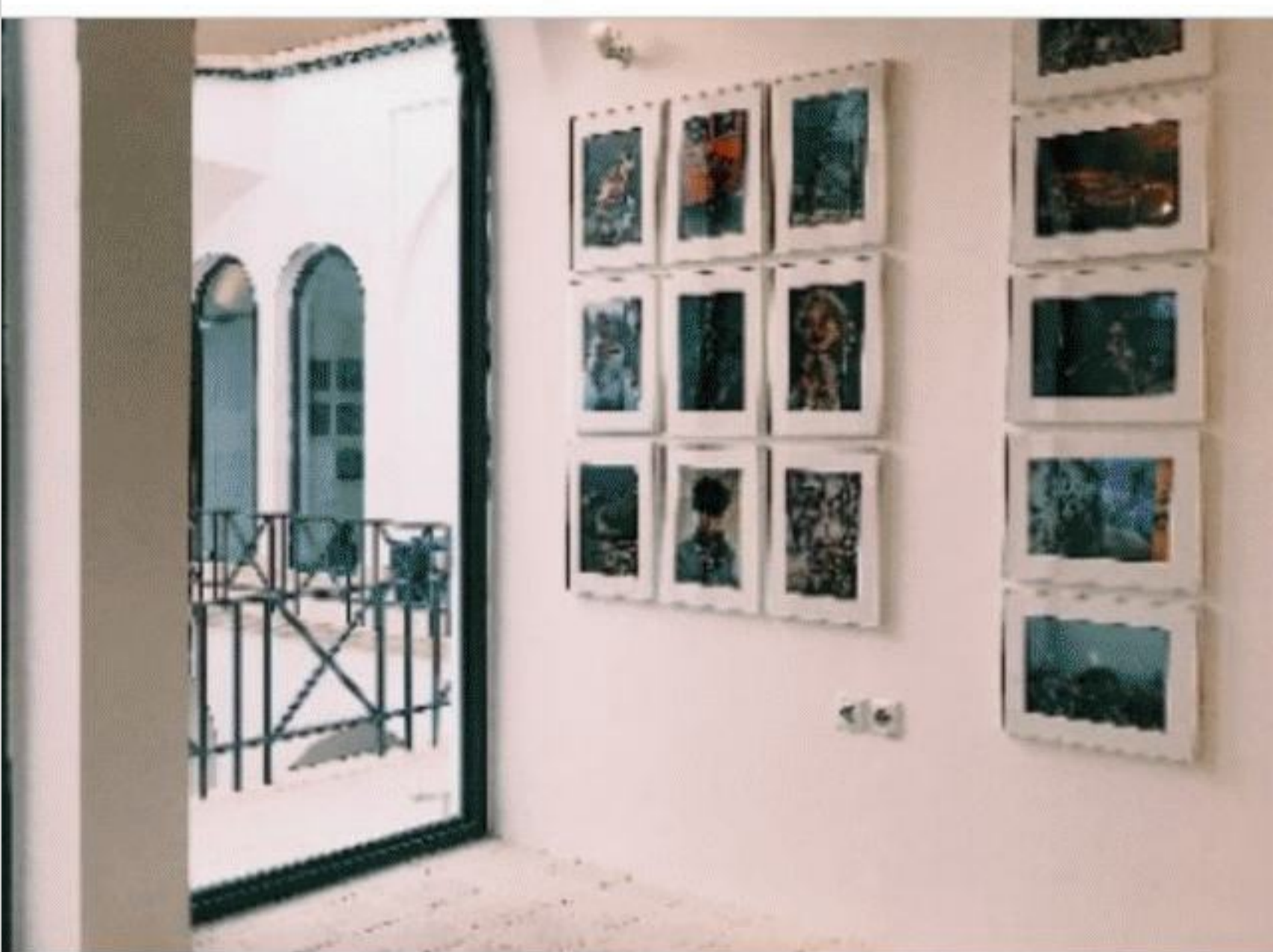
Artfi Ecosystem Utility Token

Contract Address: 286f101ee91305382d0ab83f9d35cdaf60692032feda4c44bfdd926ee29298b8 [🔗](#)

[View on Explorer](#)



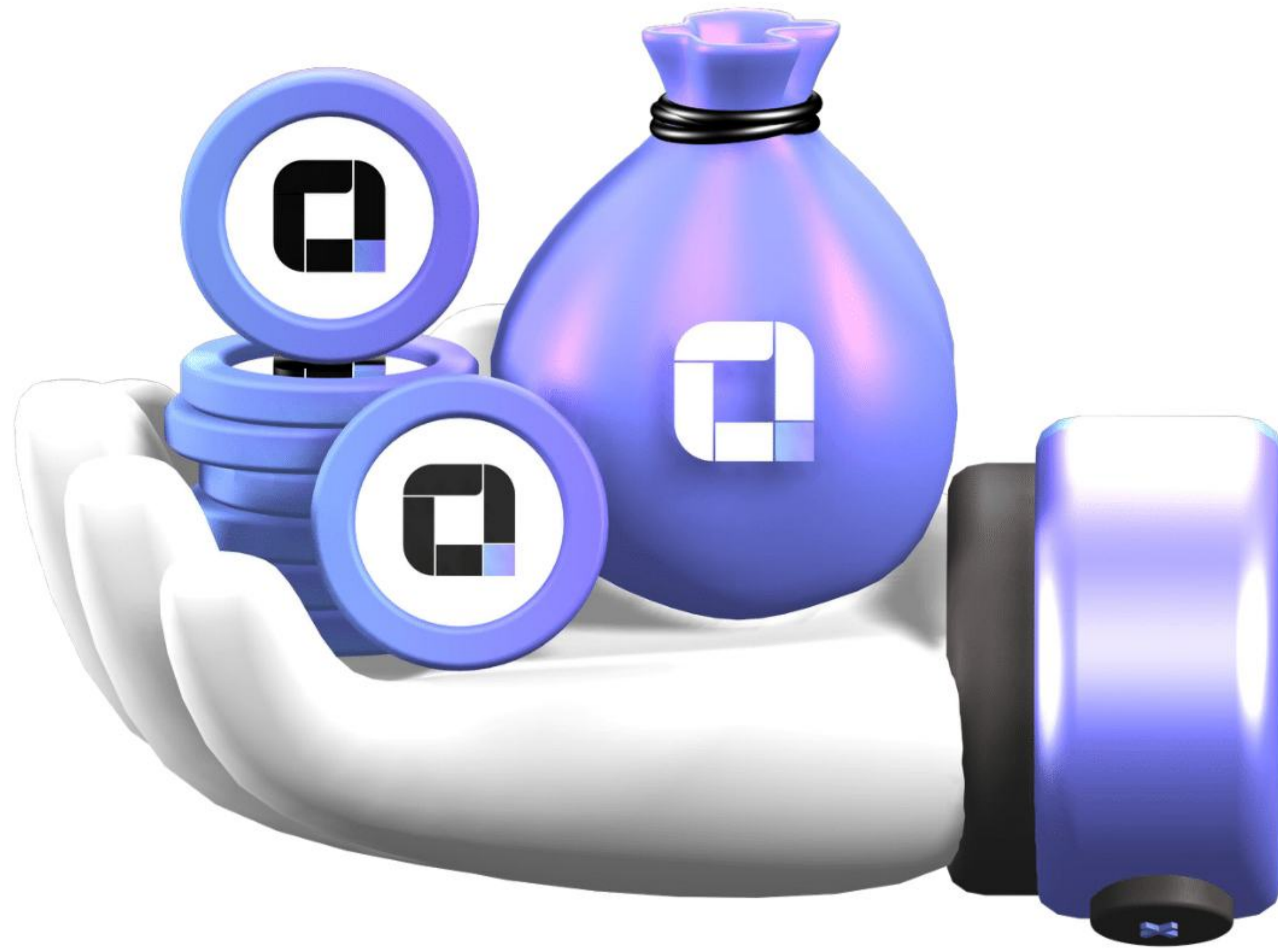
EMBARK ON THE WEB3
FRONTIER WITH REAL
WORLD ASSETS.



Decentralized Ecosystem for Global
Art Market

Artfi

Artfi Token



\$ARTFI, powers the Artfi ecosystem on the Sui blockchain. It facilitates transactions across the Ecosystem, including payments for Art Offerings, Trade, and Protocol Activities.

Additionally, It enables Governance Participation, Staking Rewards, and use of the Artfi Debit Card, a revolutionary integration that allows seamless transactions within the ecosystem.

Vision & Utility

\$ARTFI powers governance, offers staking rewards, enables seamless transactions within the ecosystem, and facilitates art purchases through our single and fractional ownership, marketplace fees, subscription-based payments, and all other payments across the ecosystem.



Distribution

Distribution	Dilution (%)	Dilution (Million)
Token Sale	27	270
Marketing	11	110
Art Ecosystem	11	110
Treasury	8	80
Team	11	110
Advisor	5	50
Aridrop	1	10
Protocol Rewards	10	100
Community	9	90
Initial liquidity	7	70
Total Supply	100 %	1,000

Distribution, Cliff and Vesting

Distribution	Valuation (Million)	Supply (%)	Unlock TGE (%)	Cliff (Months)	Vesting (Months)
Pre Seed	\$ 10	9	5	6	18 (Linear)
Seed	\$ 20	10	8	8	18 (Linear)
Strategic Round	\$ 25	6.8	10	3	12 (Linear)
Public	\$ 30	1.2	25	3	3 (Linear)

Artfi (Legal Disclaimer)

This document does not constitute an offer to the public or an offer for sale or solicitation to purchase or subscribe for any securities or tokens of **Artfi Global LLC** (the “company”) and its subsidiaries and it should not be relied on in connection with a decision to purchase or subscribe for any such securities or tokens. The document and any accompanying verbal presentation does not constitute a recommendation regarding any decision to sell or buy securities in the company or its tokens. If any person is in doubt as to the contents of this presentation, or wishes to obtain advice as to the investment merits of the company’s securities or tokens, he should seek independent advice from a person who is an authorised financial services provider. This document has not been approved by the UK's Financial Conduct Authority as a prospectus. This document and any accompanying presentation does not constitute or form part of any offer for sale or solicitation of any offer to buy or subscribe for any securities or tokens nor shall they or any part of them form the basis of or be relied on in connection with, or act as any inducement to enter into, any contract or commitment whatsoever. No reliance may be placed for any purpose whatsoever on the information or opinions contained in this document or any accompanying presentation or on the completeness, accuracy or fairness or such information, opinions or presentation.

No representation or warranty, express or implied, is given by or on behalf of the company, their respective shareholders, directors, officers or employees or any other person as to the accuracy or completeness of the information or opinions contained in this document and any accompanying verbal presentation, and no liability is accepted for any such information or opinions. This document and its contents is directed only at persons who fall within the exemptions contained in Articles 19, 48, 49 and 50 of the Financial Services and Markets Act 2000 (Financial Promotion) Order 2005, such as persons who are authorised or exempt persons within the meaning of the Financial Services and Markets Act 2000 and certain other persons having professional experience relating to investments, high net worth companies or individuals, unincorporated associations or partnerships, and the trustees of high value trusts, and persons to whom distribution may otherwise lawfully be made. Any investment, investment activity or controlled activity to which this document relates is available only to such persons and will be engaged in only with such persons. Any individual who is in any doubt about the investment to which this document relates should consult an authorised person specialising in advising on investments of the kind referred to in this document. Persons of any other description, including those that do not have professional experience in matters relating to investments, should not rely or act upon this document.

This document is not for distribution in, nor does it constitute an offer of securities for sale in, any jurisdiction where such distribution or offer is unlawful, including the United States of America, the European Union, Australia, the Republic of South Africa, Japan or Canada. The distribution of this document in some jurisdictions may be restricted by law and persons into whose possession this document comes should inform themselves about and observe any such restrictions.

Artfi (Legal Disclaimer)

Statements made in this document and any accompanying verbal presentation may include forward-looking statements that necessarily involve risks and uncertainties. Forward-looking statements may generally be identified by the use of terminology such as “may”, “will”, “expect”, “intend”, “plan”, “estimate”, “anticipate”, “believe”, or similar phrases. Other than statements of historical facts, all statements, including, among others, statements regarding the future financial position of the company, business strategy, projected levels of growth in its market (arising from either internal or external analyses), projected costs, estimates of capital expenditures and plans and objectives of management for future operation, are forward looking statements. The actual future performance of the company could differ materially from these forward-looking statements. Important factors that could cause actual results to differ materially from these expectations including known and unknown risks.

Statements made in this document and any accompanying verbal presentation may include forward-looking statements that necessarily involve risks and uncertainties. Forward-looking statements may generally be identified by the use of terminology such as “may”, “will”, “expect”, “intend”, “plan”, “estimate”, “anticipate”, “believe”, or similar phrases. Other than statements of historical facts, all statements, including, among others, statements regarding the future financial position of the company, business strategy, projected levels of growth in its market (arising from either internal or external analyses), projected costs, estimates of capital expenditures and plans and objectives of management for future operation, are forward looking statements. The actual future performance of the company could differ materially from these forward-looking statements. Important factors that could cause actual results to differ materially from these expectations including known and unknown risks.